

Preface

Here are my online notes for my Algebra course that I teach here at Lamar University, although I have to admit that it's been years since I last taught this course. At this point in my career I mostly teach Calculus and Differential Equations.

Despite the fact that these are my "class notes", they should be accessible to anyone wanting to learn Algebra or needing a refresher for algebra. I've tried to make the notes as self contained as possible and do not reference any book. However, they do assume that you've had some exposure to the basics of algebra at some point prior to this. While there is some review of exponents, factoring and graphing it is assumed that not a lot of review will be needed to remind you how these topics work.

Here are a couple of warnings to my students who may be here to get a copy of what happened on a day that you missed.

1. Because I wanted to make this a fairly complete set of notes for anyone wanting to learn algebra I have included some material that I do not usually have time to cover in class and because this changes from semester to semester it is not noted here. You will need to find one of your fellow class mates to see if there is something in these notes that wasn't covered in class.
2. Because I want these notes to provide some more examples for you to read through, I don't always work the same problems in class as those given in the notes. Likewise, even if I do work some of the problems in here I may work fewer problems in class than are presented here.
3. Sometimes questions in class will lead down paths that are not covered here. I try to anticipate as many of the questions as possible in writing these up, but the reality is that I can't anticipate all the questions. Sometimes a very good question gets asked in class that leads to insights that I've not included here. You should always talk to someone who was in class on the day you missed and compare these notes to their notes and see what the differences are.
4. This is somewhat related to the previous three items, but is important enough to merit its own item. **THESE NOTES ARE NOT A SUBSTITUTE FOR ATTENDING CLASS!!** Using these notes as a substitute for class is liable to get you in trouble. As already noted not everything in these notes is covered in class and often material or insights not in these notes is covered in class.

Rational Functions

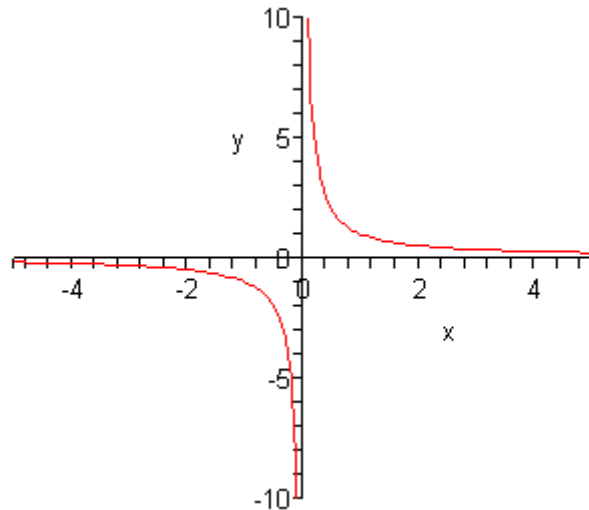
In this final section we need to discuss graphing rational functions. It's probably best to start off with a fairly simple one that we can do without all that much knowledge on how these work.

Let's sketch the graph of $f(x) = \frac{1}{x}$. First, since this is a rational function we are going to have to be careful with division by zero issues. So, we can see from this equation that we'll have to avoid $x = 0$ since that will give division by zero.

Now, let's just plug in some values of x and see what we get.

x	$f(x)$
-4	-0.25
-2	-0.5
-1	-1
-0.1	-10
-0.01	-100
0.01	100
0.1	10
1	1
2	0.5
4	0.25

So, as x get large (positively and negatively) the function keeps the sign of x and gets smaller and smaller. Likewise as we approach $x = 0$ the function again keeps the same sign as x but starts getting quite large. Here is a sketch of this graph.



First, notice that the graph is in two pieces. Almost all rational functions will have graphs in multiple pieces like this.

Next, notice that this graph does not have any intercepts of any kind. That's easy enough to check for ourselves.

Recall that a graph will have a y -intercept at the point $(0, f(0))$. However, in this case we have to avoid $x = 0$ and so this graph will never cross the y -axis. It does get very close to the y -axis, but it will never cross or touch it and so no y -intercept.

Next, recall that we can determine where a graph will have x -intercepts by solving $f(x) = 0$. For rational functions this may seem like a mess to deal with. However, there is a nice fact about rational functions that we can use here. A rational function will be zero at a particular value of x only if the numerator is zero at that x and the denominator isn't zero at that x . In other words, to determine if a rational function is ever zero all that we need to do is set the numerator equal to zero and solve. Once we have these solutions we just need to check that none of them make the denominator zero as well.

In our case the numerator is one and will never be zero and so this function will have no x -intercepts. Again, the graph will get very close to the x -axis but it will never touch or cross it.

Finally, we need to address the fact that graph gets very close to the x and y -axis but never crosses. Since there isn't anything special about the axis themselves we'll use the fact that the x -axis is really the line given by $y = 0$ and the y -axis is really the line given by $x = 0$.

In our graph as the value of x approaches $x = 0$ the graph starts gets very large on both sides of the line given by $x = 0$. This line is called a **vertical asymptote**.

Also, as x get very large, both positive and negative, the graph approaches the line given by $y = 0$. This line is called a **horizontal asymptote**.

Here are the general definitions of the two asymptotes.

1. The line $x = a$ is a **vertical asymptote** if the graph increases or decreases without bound on one or both sides of the line as x moves in closer and closer to $x = a$.
2. The line $y = b$ is a **horizontal asymptote** if the graph approaches $y = b$ as x increases or decreases without bound. Note that it doesn't have to approach $y = b$ as x BOTH increases and decreases. It only needs to approach it on one side in order for it to be a horizontal asymptote.

Determining asymptotes is actually a fairly simple process. First, let's start with the rational function,

$$f(x) = \frac{ax^n + \dots}{bx^m + \dots}$$

where n is the largest exponent in the numerator and m is the largest exponent in the denominator.

We then have the following facts about asymptotes.

1. The graph will have a vertical asymptote at $x = a$ if the denominator is zero at $x = a$ and the numerator isn't zero at $x = a$.
2. If $n < m$ then the x -axis is the horizontal asymptote.
3. If $n = m$ then the line $y = \frac{a}{b}$ is the horizontal asymptote.
4. If $n > m$ there will be no horizontal asymptotes.

The process for graphing a rational function is fairly simple. Here it is.

Process for Graphing a Rational Function

1. Find the intercepts, if there are any. Remember that the y -intercept is given by $(0, f(0))$ and we find the x -intercepts by setting the numerator equal to zero and solving.
2. Find the vertical asymptotes by setting the denominator equal to zero and solving.
3. Find the horizontal asymptote, if it exists, using the fact above.
4. The vertical asymptotes will divide the number line into regions. In each region graph at least one point in each region. This point will tell us whether the graph will be above or below the horizontal asymptote and if we need to we should get several points to determine the general shape of the graph.
5. Sketch the graph.

Note that the sketch that we'll get from the process is going to be a fairly rough sketch but that is okay. That's all that we're really after is a basic idea of what the graph will look at.

Let's take a look at a couple of examples.

Example 1 Sketch the graph of the following function.

$$f(x) = \frac{3x+6}{x-1}$$

Solution

So, we'll start off with the intercepts. The y -intercept is,

$$f(0) = \frac{6}{-1} = -6 \quad \Rightarrow \quad (0, -6)$$

The x -intercepts will be,

$$\begin{aligned} 3x+6 &= 0 \\ x &= -2 \quad \Rightarrow \quad (-2, 0) \end{aligned}$$

Now, we need to determine the asymptotes. Let's first find the vertical asymptotes.

$$x-1 = 0 \quad \Rightarrow \quad x = 1$$

So, we've got one vertical asymptote. This means that there are now two regions of x 's. They

are $x < 1$ and $x > 1$.

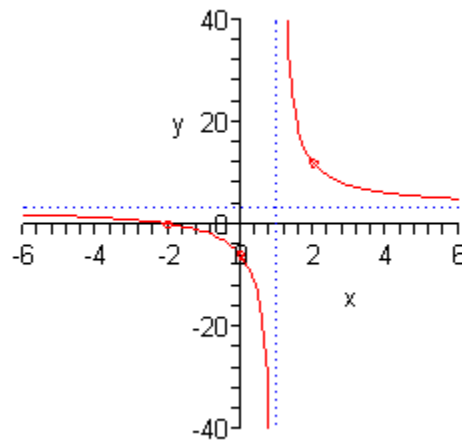
Now, the largest exponent in the numerator and denominator is 1 and so by the fact there will be a horizontal asymptote at the line.

$$y = \frac{3}{1} = 3$$

Now, we just need points each region of x 's. Since the y -intercept and x -intercept are already in the left region we won't need to get any points there. That means that we'll just need to get a point in the right region. It doesn't really matter what value of x we pick here we just need to keep it fairly small so it will fit onto our graph.

$$f(2) = \frac{3(2)+6}{2-1} = \frac{12}{1} = 12 \quad \Rightarrow \quad (2,12)$$

Okay, putting all this together gives the following graph.



Note that they asymptotes are shown as dotted lines.

Example 2 Sketch the graph of the following function.

$$f(x) = \frac{9}{x^2 - 9}$$

Solution

Okay, we'll start with the intercepts. The y -intercept is,

$$f(0) = \frac{9}{-9} = -1 \quad \Rightarrow \quad (0, -1)$$

The numerator is a constant and so there won't be any x -intercepts since the function can never be zero.

Next, we'll have vertical asymptotes at,

$$x^2 - 9 = 0 \quad \Rightarrow \quad x = \pm 3$$

So, in this case we'll have three regions to our graph : $x < -3$, $-3 < x < 3$, $x > 3$.

Also, the largest exponent in the denominator is 2 and since there are no x 's in the numerator the

largest exponent is 0, so by the fact the x -axis will be the horizontal asymptote.

Finally, we need some points. We'll use the following points here.

$$f(-4) = \frac{9}{7} \quad \left(-4, \frac{9}{7}\right)$$

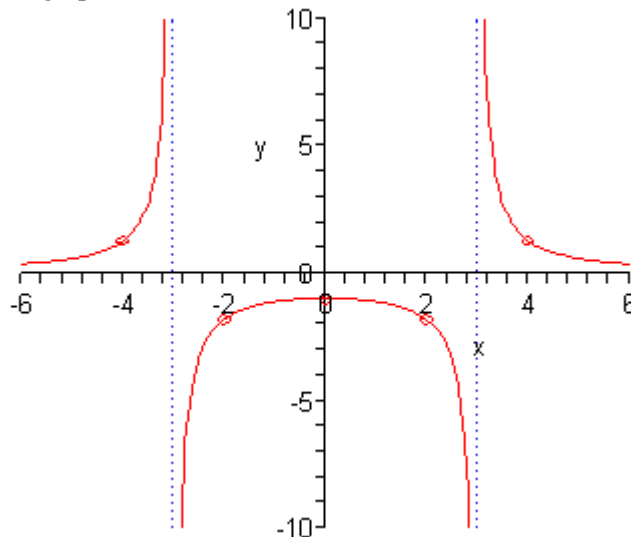
$$f(-2) = -\frac{9}{5} \quad \left(-2, -\frac{9}{5}\right)$$

$$f(2) = -\frac{9}{5} \quad \left(2, -\frac{9}{5}\right)$$

$$f(4) = \frac{9}{7} \quad \left(4, \frac{9}{7}\right)$$

Notice that along with the y -intercept we actually have three points in the middle region. This is because there are a couple of possible behaviors in this region and we'll need to determine the actual behavior. We'll see the other main behaviors in the next examples and so this will make more sense at that point.

Here is the sketch of the graph.



Example 3 Sketch the graph of the following function.

$$f(x) = \frac{x^2 - 4}{x^2 - 4x}$$

Solution

This time notice that if we were to plug in $x = 0$ into the denominator we would get division by zero. This means there will not be a y -intercept for this graph. We have however, managed to find a vertical asymptote already.

Now, let's see if we've got x -intercepts.

$$x^2 - 4 = 0 \quad \Rightarrow \quad x = \pm 2$$

So, we've got two of them.

We've got one vertical asymptote, but there may be more so let's go through the process and see.

$$x^2 - 4x = x(x - 4) = 0 \quad \Rightarrow \quad x = 0, x = 4$$

So, we've got two again and the three regions that we've got are $x < 0$, $0 < x < 4$ and $x > 4$.

Next, the largest exponent in both the numerator and denominator is 2 so by the fact there will be a horizontal asymptote at the line,

$$y = \frac{1}{1} = 1$$

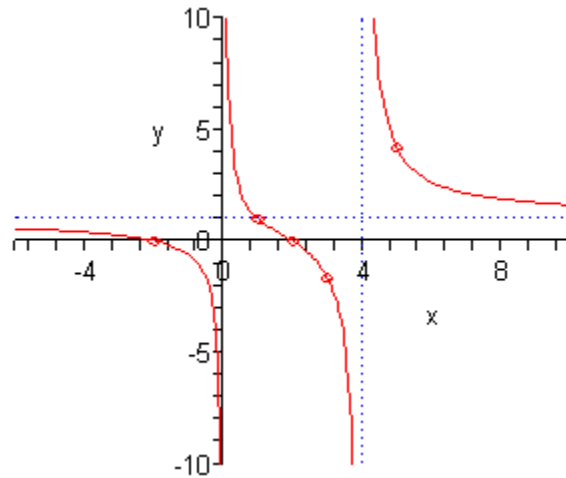
Now, one of the x -intercepts is in the far left region so we don't need any points there. The other x -intercept is in the middle region. So, we'll need a point in the far right region and as noted in the previous example we will want to get a couple more points in the middle region to completely determine its behavior.

$$f(1) = 1 \quad (1, 1)$$

$$f(3) = -\frac{5}{3} \quad \left(3, -\frac{5}{3}\right)$$

$$f(5) = \frac{21}{5} \quad \left(5, \frac{21}{5}\right)$$

Here is the sketch for this function.



Notice that this time the middle region doesn't have the same behavior at the asymptotes as we saw in the previous example. This can and will happen fairly often. Sometimes the behavior at the two asymptotes will be the same as in the previous example and sometimes it will have the opposite behavior at each asymptote as we see in this example. Because of this we will always need to get a couple of points in these types of regions to determine just what the behavior will be.

